



# Asian Marine Services

## Public Company Limited



**We Emphasize on Time and Quality**



# Group of Companies

## ASIAN MARINE SERVICES PCL.



**Ship Repair  
Ship building  
Engineering**

80 Vessels repairing annually  
450 Manpowers  
Listed in Stock Market  
Exchange of Thailand (SET)

ISO 9001:2015  
ISO 14001:2015  
ISO 45001:2018

## ECOMARINE



**Water environment  
solution provider**

4 Dredging vessel  
Water Environment Product &  
Services e.g. Water hyacinth  
harvester

ISO 9001:2015

## FUTURE POWER SOLUTIONS



**System integration  
Solution provider**

Look Ahead to capture Business  
opportunities Authorized  
dealer/Distributor of leading  
equipment System integration  
Solution provider





# Vision & Mission

## Vision

To develop the company to be one of the best in the region for

- Ship repair
- Shipbuilding
- Ship conversion and upgrading
- Engineering construction
- Offshore support & construction

With quality works and services to meet customer's requirements.

## Mission

The company's commitment is to accomplish following important tasks;

### **Customers:**

To fulfill our client's requirements with optimum standard of services at the minimum time

### **Shareholders:**

To satisfy shareholders in terms of corporate profitability and growth

### **Yard Staff:**

Career development and good standard of living for all concerned

### **Environment and Community:**

To be responsible for environmental protection and community well to be.



## About ASIMAR

- ASIMAR : ASian MARine services public company limited
- Ship Repair, Ship Building, and Engineering for over 40 years
- Listed in The Stock Exchange of Thailand (SET) since 1996
- Located at Chao Phraya River wharf no. 1
- 300 meters water front average depth of 10 meters
- Max. 5 vessels anchorage area (Sapasamitr area)
- Operate by 2 floating docks (Max. 20,000DWT capacity)
- 2 launching slipways (Max. 125 meters in length x 28 meters width)
- Average 80 vessels docking repairing annually
- 20,000 DWT new built annual capability
- 1,000,000 Man-Hour FTE (Full Time Employed) ++
- Quality : ISO 9001 : 2015
- Environmental : ISO 14001 : 2015
- Safety workplace : OHSAS 45001 : 2018





# SHEQ



**ISO 9001 : 2015**  
shipbuilding and repairing  
including ship designing



**ISO 14001 : 2015**  
Environmental Management  
System



**ISO 45001 : 2018**  
The Occupational Health &  
Safety Management System



# Reference Customers



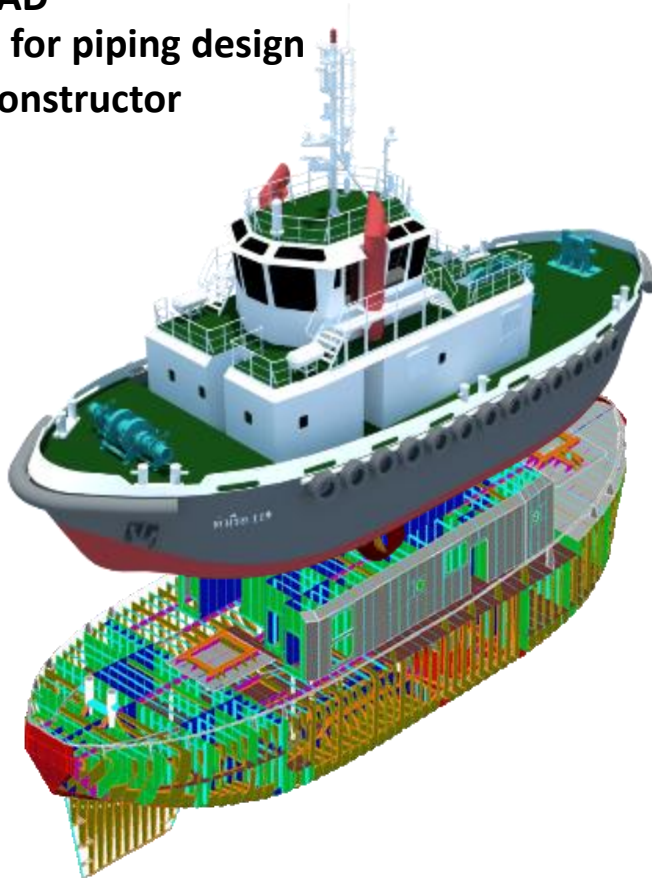


# Design Facilities

ASIMAR's design team of engineers and draftsmen support repair ships, ship conversion and new-building activities preparing detailed design, shop and as-built drawings.

## Programs :

- AutoCAD
- SB3DS for piping design
- Ship Constructor



Lloyd's  
Register



**ClassNK**



**BUREAU  
VERITAS**

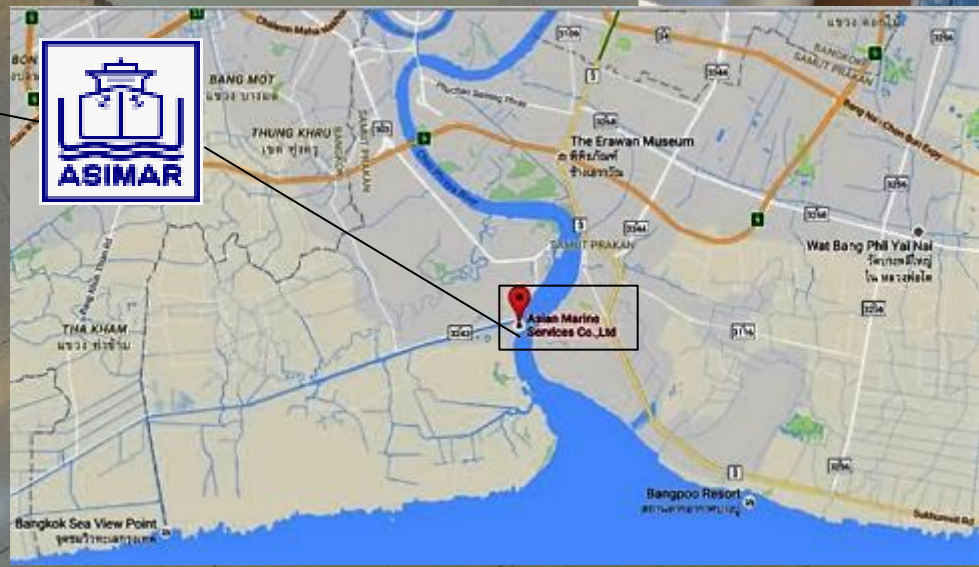
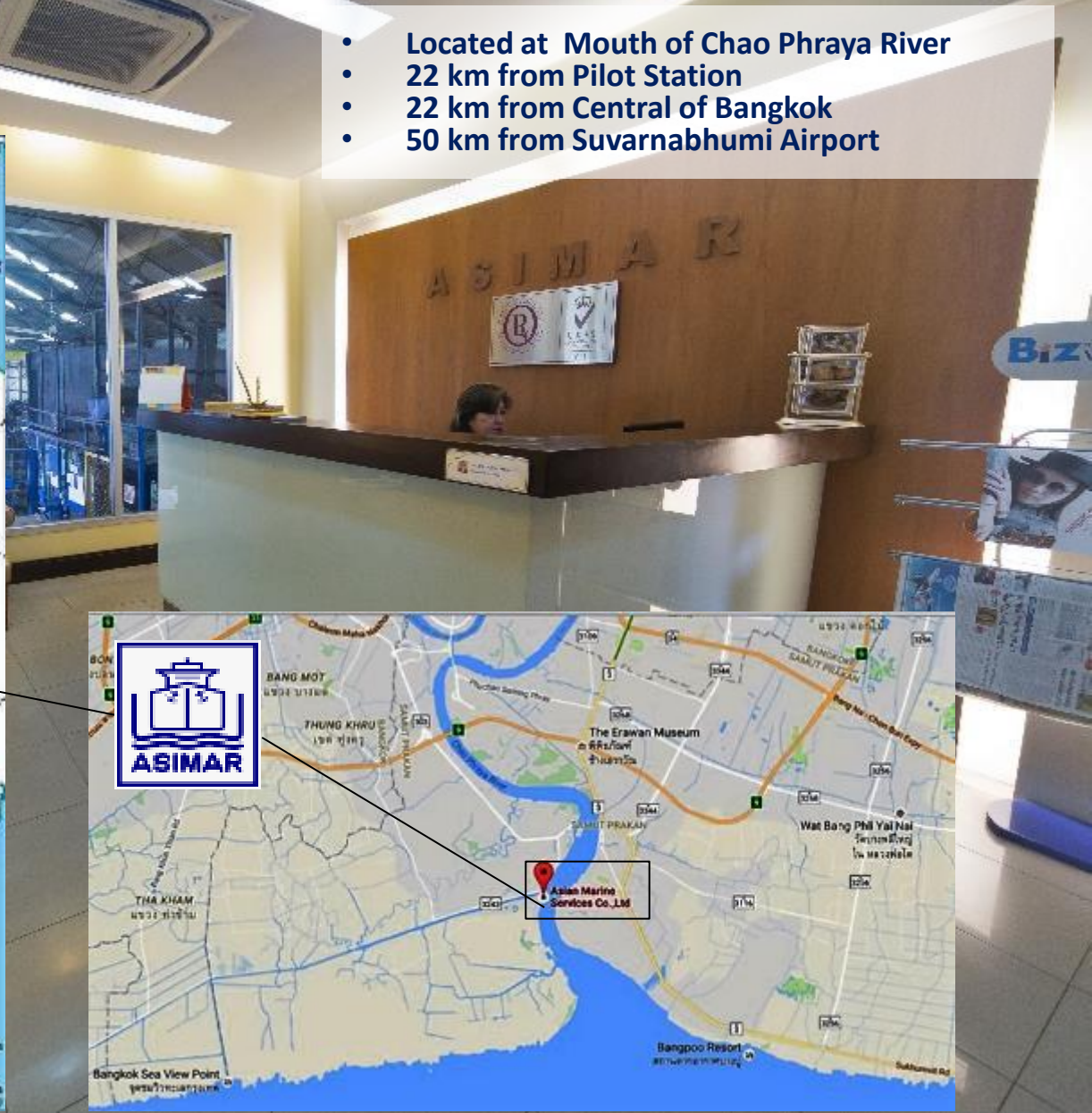






# Location is The Key

- Located at Mouth of Chao Phraya River
- 22 km from Pilot Station
- 22 km from Central of Bangkok
- 50 km from Suvarnabhumi Airport







# Facilities at Samutprakarn



**ASIMAR**

**1**

Max. vessel	6,000 DWT
L x B	97m x 19.6m.
Max lifting cap.	2,000 t.

**ASIMAR**

**2**

Max. vessel	20,000 DWT
L x B	161m x 28.5m.
Max lifting cap.	6,500 t.

## Primary Facilities

Total Yard Area	: 36,000 m2 (9 Acre)
Water Front	: 300 m.
Wharf	: 126 m , depth 12 m.
Slipways	
- Northern	: 1 x 125 m x 28 m
- Southern	: 1 x 80 m x 18 m
Range for Repair	: Vessel up to 20,000 Dwt
Range for New Building	: Vessel up to 120 m LOA.
Fabrication Shops	: 3 nos. total 3,300 m2
Machine Shop	: 2 nos. total 2,100 m2
Pipe shop	: 600 m2
CNC shop	: 600 m2
Bonded Warehouse	: 400 M <sup>2</sup>



## Fabrication Shops

**No.4**

Length : 50 meters  
Width : 26.9 meters  
Height : 15 meters  
Overhead Crane : 2 x 10 tons





# Facility and Equipment



Northern slipway

Length : 125 meters

Width : 28 meters



# Facility and Equipment



Southern slipway

Length : 80 meters

Width : 18 meters

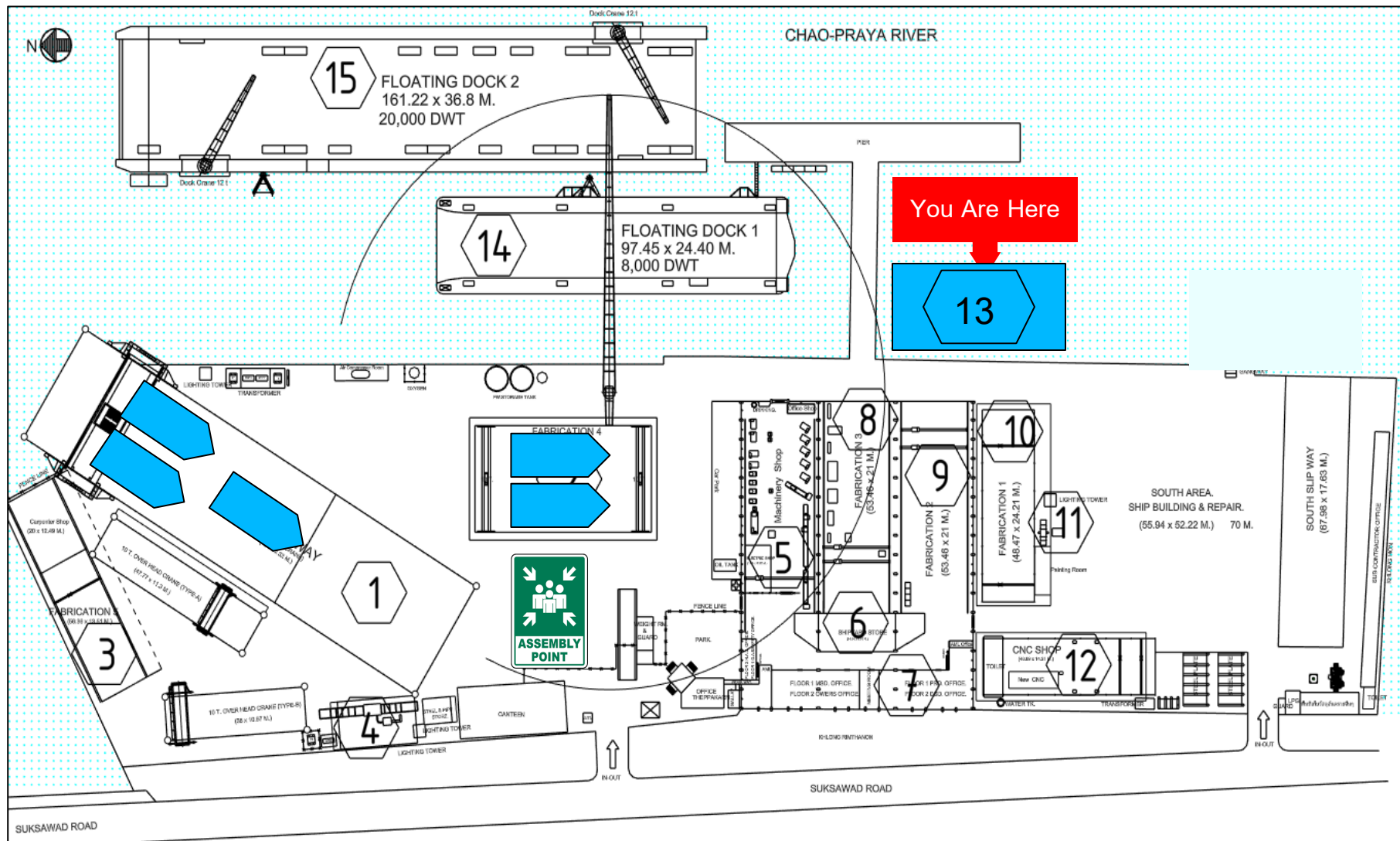




# Facility and Equipment



Floating Dock	Dimension	Lifting Capacity	Max. Vessel	Crane
Asimar 1	97x19.6 meter	2,500 T	6,000 dwt.	Shore crane
Asimar 2	161x28.5 meter	6,500 T	20,000 dwt	2x12t







# Facility and Equipment



## Heavy Lift

Mobile Crane	1 x 80 tons ,1 x 50 tons
Overhead Gantry Crane	1 x 100 tons
Dock Crane	2 x 12.5 tons
Gantry Cranes	11 x 5 tons
Gantry Cranes	2 x 10 tons
Fork Lift	2 x 7 tons
Fork Lift	2 x 5 tons







# Facility and Equipment

## MACHINERIES & CUTTING TOOLS

CNC	:	3 sets
Welding machine	:	220 sets
Lathe machine	:	10 sets
Hyd press 400t	:	1 set
Shear cutter	:	2 sets
Bending machine	:	2 sets
Flanging machine	:	2 sets
Rolling machine	:	1 set
Steel shot blast	:	2 sets
2500 bar Hydro blast	:	1 set







## Facility and Equipment





# Facilities at Surat Thani



## Primary Facilities

<b>Total Yard Area</b>	<b>: 38,400 sq.m.</b>
<b>Slipway</b>	
<b>Length</b>	<b>: 95 m.</b>
<b>Breadth</b>	<b>: 20.5 m.</b>
<b>Work shop</b>	<b>: 3,136 sq.m.</b>
<b>Range for Repair</b>	<b>: Up to 1000 GRT</b>

## Services

- Hull preparation and Painting
- Anchor chain
- Hull anode
- Valve
- Tail shaft repair
- Steel work
- Pipe work
- Machinery work (Winch, Hydraulic motor, Pump)
- Electrical work
- Spare part supply





## Key Markets / Track Record

Tug Boats



Defence & Security



Work Boats



Cargo Ships



Offshore Vessels



Passenger & Ferries





## Key Markets / Track Record



## Tug Boats







# Tug Boat

## 30 TONS BOLLARD PULL - TARUA 119

### Owner

Port Authority of Thailand

### Principal Particulars

Length Overall	32.00 meters
Breadth (Moulded)	10.50 meters
Depth Hull (Moulded)	4.50 meters
Draft (Moulded)	3.00 meters

### Performance

Max. speed:	12 knots
Static Bollard pull:	30.0 tons
Gross tonnage:	420 tons

### Main Machineries

Main Engine	2 X 1030 kW, 800 rpm, 8 cyl.
Propulsion System	2 X Azimuth Thrusters (Z-Drive Fixed Pitch)

### Fire Fitting

FIFI System	2 X 250 m <sup>3</sup> /hr,
Engine Drive	165 kW @ 3100 rpm

### Design Standard

LR Class





# Tug Boat

## 40 TONS BOLLARD PULL - TARUA 301

### Owner

Port Authority of Thailand

### Principal Particulars

Length Overall	32.00 meters
Breadth (Moulded)	10.50 meters
Depth Hull (Moulded)	4.50 meters
Draft (Moulded)	3.00 meters

### Performance

Max. speed:	12 knots
Static Bollard pull:	40.0 tons
Gross tonnage:	420 tons

### Main Machineries

Main Engine	2 X 1324 kW, 900 rpm, 8 cyl.
Propulsion System	2 X Azimuth Thrusters (Z-Drive Fixed Pitch)

### Fire Fitting

FIFI System	2 X 250 m <sup>3</sup> /hr,
Engine Drive	165 kW @ 3100 rpm

### Design Standard

LR Class







# Tug Boat

## 40 TONS BOLLARD PULL ASD - KOH TAKIEV

### Owner

Port Authority of Sihanuokville, Cambodia

### Principal Particulars

Length Overall	31.00 meters
Breadth (Moulded)	9.20 meters
Depth Hull (Moulded)	3.80 meters
Draft (Moulded)	2.90 meters

### Propulsion Machinery

Main Engine	2 X Diesel engine
Total power	2 X 1600 PS @ 750 rpm.
Azimuth thruster	2 X 5 blades
Propeller diameter	2,000 mm.

**Design Standard** NK Class





# Tug Boat

## 50 TONS BOLLARD PULL ASD - TARUA 304

### Owner

Port Authority of Thailand

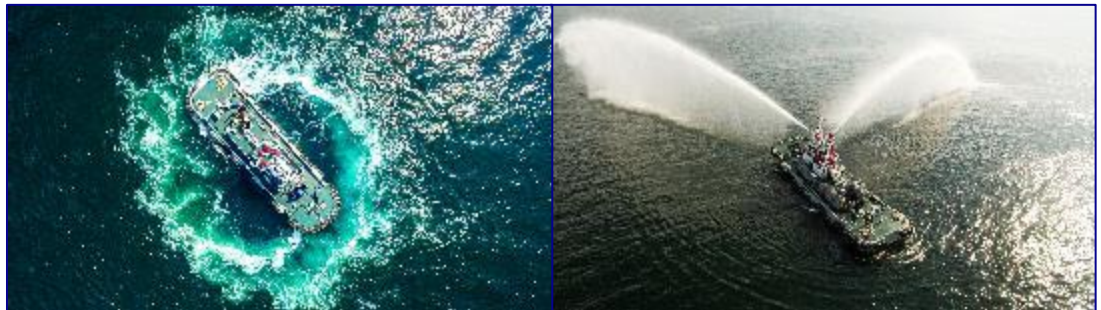
### Principal Particulars

Length Overall	36.20 meters
Breadth (Moulded)	10.00 meters
Depth Hull (Moulded)	4.40 meters
Draft (Moulded)	4.00 meters
Gross tonnage	250 tons

### Propulsion Machinery

Main engine	2 X Diesel engines
Total power	2 X 1600 PS @ 750 rpm.
Azimuth thruster	2 X 5 blades FPP in nozzle
Propeller diameter	2,000 mm.

**Design Standard** LR Class







# Tug Boat

## 55 TONS BOLLARD PULL – H.T.M.S. TA CHAI

### Principal Particulars

Length Overall	31.5 meters
Beam (Moulded)	12.6 meters
Depth (Moulded)	5.4 meters
Draft (Maximum)	4.5 meters

### Performance

Speed	12 Knots
Accommodation	20 Berths

### Capacities

Fuel oil	160 m <sup>3</sup>
Fresh water	32 m <sup>3</sup>

### Main Machineries

Main Engine	2 x MTU 16V4000M54
Azimuth	2 x Azimuth SCHOTTEL SRP 400

### Fire Fighting

Fire Fighting Systems FSS

### Design Standard

Designer	Robert Allan
Class	LR + 100A1, Tug,
Firefighting Ship	1 (2400m <sup>3</sup> /hr) with water spray





## Key Markets / Track Record



## Defence & Security





# Defence & Security

## H.T.M.S HUAHIN PGB-541 & H.T.M.S KLANG PGB-542

### Principal Particulars

Length Overall	60.00 meters
Breadth (Moulded)	8.90 meters
Depth Hull (Moulded)	5.25 meters
Max Speed	25.00 knots
Range	500 NM

### Engine/Generator/ Aux. Machinery

#### Main Engine

: 3 x PAXMAN, Type 12 VP185, 3,500 BHP

#### Gen. Set

: 3 x Man, Type D2866 LE, 230 kW. @1,500 RPM.  
(214 ekW)

#### Sludge Pump (Sewage)

: 2 x 2kW/Eah

#### S.W. Pressure

: 1 x 7.5 m<sup>3</sup>/H

#### HYD. POWER PACK for CPP

: 1 x LIP, HPP-200





# Defence & Security

## Modernization

Refurbishment of 3 (three)  
Marine Police Department  
Petrol gun boat



Refurbishment on Royal Thai Navy  
Vessel : HTMS Supairin



Refurbishment on Royal Thai Navy  
Vessel : Bangrajan & Nongsarai





## Key Markets / Track Record



## Work Boats





# Work Boat

## TARUA 123

### Owner

Port Authority of Thailand

### Principal Particulars

Length Overall	41.80 meters
Breadth (Moulded)	10.00 meters
Depth Hull (Moulded)	4.00 meters
Full load Draft (Moulded)	2.70 meters
Deadweight	200 tons
Gross tonnage	593 tons

### Design Standard

ABS Class







# Work Boat

## TOYOTA Canal Cleaning Boat

### Owner

Toyota Motor Thailand

### Principal Particulars

Length Overall	9.00 m.
Beam, (Moulded)	3.50 m.
Depth Hull (Moulded)	1.20 m.
Draft (Moulded)	0.60 m.

### Foldable Crane

Max. Lifting capacity 6.50 T/m.

Outreach hydraulic extension 5.20 m.

Lifting Capacity standard

- 3,800kg at 1.70 m.
- 2,300kg at 2.50 m.
- 1,800kg at 3.50 m.
- 1,300kg at 5.00 m.
- 1,000kg at 6.50 m.

Slewing angle 410 angles

### Propulsion Machinery

Main Engine (Diesel engine)

X1 1GD-FTV engine 175 hp at 3400 rpm.

X2 Paddle Wheel





# Work Boat

## 25 units of Paddle wheel

### Principal Particulars

Length Overall	14.00 meters
Breadth (Moulded)	3.80 meters
Depth Hull (Moulded)	0.85 meters
Draft max load	0.40 meters

### Performance

Max. speed:	6 km/hr.
Main Engine	1 X 60 HP, 2600 rpm
Propulsion System	2 X Paddle Wheels

### Capacity

Fuel tank	100 L
Hydraulic oil tank	180 L







# Work Boat

## SEA WASTE COLLECTOR BOAT

### Principal Particulars

Length Overall	15.30 meters
Breadth (Moulded)	4.00 meters
Depth Hull (Moulded)	2.00 meters
Draft max load	1.20 meters

### Performance

Max. speed:	12 knots
Main Engine	1 X 404 kW, 3300 rpm
Propulsion System	1 X Fixed Pitch

### Capacity

Fuel tank	500 L
Hydraulic oil tank	150 L
Oil Separator tank	430 L
Storage tank	100 L
Oil Dispersant tank	50 L
Fresh water tank	100 L
Trash container	4 m3
Crew	4 P

<b>Design Standard</b>	RINA Class
------------------------	------------





# Work Boat

## HDPE Paddle Wheel

### Principal Particulars

Length Overall	6.00 meters
Breadth (Moulded)	3.10 meters
Draft max load	0.50 meters

### Material

Hull Material	HDPE
Paddle Wheel Material	HDPE
Conveyor Structure	SS400
Conveyor Belt	SUS304

### Performance

Max. Speed:	> 1 Knot
Main Engine	1 x 20 HP
Propulsion System	2 x Paddle Wheels







## Key Markets / Track Record



## Cargo Ships





# Container & Cargo Ship

## M.V.GATI PRIDE 442 TEU Cargo Ship

### Principal Particulars

Length Overall	101.01 m.
Breadth (Moulded)	18.80 m.
Depth Hull (Moulded)	9.30 m.
Draught mean (Full load)	7.30 m.
Gross tonnage	5,015 tons
Cargo ship	422 TEU

### Propulsion Machinery

Main Engine	X1 Wartsila 8L32
Output	4,000 kW
Propellers	X1 CPP, Dia. 4.5 m.

### Deck Load

Tank Top in Hold	10 T/sqm.
Weather Deck	40 T/ TEU Container
Hatch Cover	40 T/ TEU/FEU

<b>Design Standard</b>	IRS Class
------------------------	-----------







# Container & Cargo Ship

## Tran-shipment Barge Crane

### Principal Particulars

Length Overall	63.00 meters
Breadth (Moulded)	22.00 meters
Depth Hull (Moulded)	5.00 meters
Designed draft	2.00 meters
Deck Loading	5.00 T/m <sup>2</sup>
Gross tonnage	2,204 tons
Crane	2xMac Gregor K3030-4H

### Scope of work

- Crane column and support design
- Crane column and support installation
- Crane housing and Jib installation
- Crane Load test
- Hull construction
- Accommodation fabrication
- Piping work for Ballast tank ,Gen.
- Cooling and accommodation





## Key Markets / Track Record



## Offshore Vessels





# Offshore Vessel

## M.V.AZZAM

### Principal Particulars

Length Overall	50.00 meters
Breadth (Moulded)	12.00 meters
Depth Hull (Moulded)	4.50 meters
Draft (Moulded)	3.60 meters
GRT/NRT	885/265 tons
Deadweight	2,204 tons
Deck Cargo	255 tons
Deck Area	300 Sq.m.

### Propulsion Machinery

Main Engines	WARTSILA 6L20
Propulsion	2 x 1440 HP
Gear Box	ZF.W 12000
Bow Thruster	Schottel motor control
Stern Thruster	CAT. C18
Aux. Genset	3 x 250 K.W CAT C 9

### Design Standard

ABS Class





# Offshore Vessel

## M.V. HORIZON NOMAD

### Principal Particulars

Length Overall	60.00 meters
Breadth (Moulded)	13.30 meters
Depth Hull (Moulded)	5.00 meters
Draft (Moulded)	3.80 meters
GRT	1,419.59 tons
Deadweight	1,024.55 tons

### Propulsion Machinery

Main Engines	2 x Caterpillar 3512B-1174kW @1600rpm
Propulsion	2 x HRP AZIMUTH THRUSTER UNTIS, HRP6000 TYPE HRP6111WM
Bow Thruster	2 x HRP 400C TT rate 350 kwx 1500 rpm
Main Generator	4 x Cummins-STAMFORD 425 kW/440 V/60 Hz/3 Ph
Emergency	1 x Cummins-STAMFORD 64 kW/440 V/60 Hz/3 Ph

**Design Standard**      ABS Class







# Offshore Vessel

## M.V. PAC BINTAN

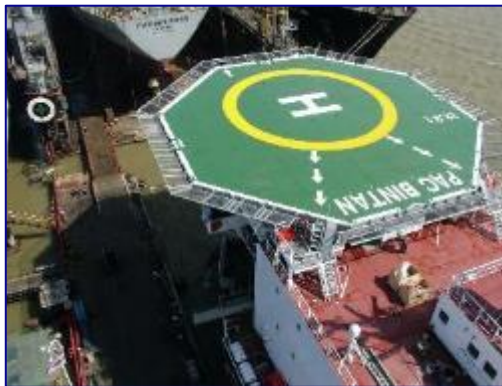
### Principal Particulars

Length Overall	90.59 meters
Breadth (Moulded)	20.00 meters
Depth Hull (Moulded)	5.00 meters
Draft (Moulded)	3.70 meters
GRT/NET	2,518/755 tons
Deck Area	531.3 Sq. meter 100 mm thick hardwood allow the travel of 225 SWL crawler crane, which is about 200t in weight.
Deck Strength	10 T/ M2

### Propulsion Machinery

Main Engines	2 x YANMAR M220
Propulsion	2 X Fix pitch propeller
Bow Thruster	Jastram bow thruster type BU60
Aux. Genset	4 x 218 kW Caterpillar 3406B 3 x 500 kW Caterpillar 3412

<b>Design Standard</b>	BV Class
------------------------	----------





## Key Markets / Track Record



## Passenger & Ferries







# Passenger & Ferries

## Aluminum Catamaran - Pralarn

### Principal Particulars

Length Overall	20.00 meters
B.O.A.	8.00 meters
B.HULL ONLY	5.25 meters
DEPTH MLD.	2.60 meters
DRAUGHT MEAN	1.25 meters
SPEED (FULL LOAD)	25 knots
Passenger	140 PAX.

### Propulsion Machinery

Main Engine	2 X MTU
SHAFTING	2 X FIXED PITCH PROPELLER





# Passenger & Ferries

## Aluminum Catamaran - Namuang

### Principal Particulars

Length Overall	26.40 meters
B.O.A.	8.50 meters
B.HULL ONLY	2.30 meters
DEPTH MLD.	2.60 meters
DRAUGHT MEAN	1.25 meters
SPEED (FULL LOAD)	25 knots
Passenger	260 PAX.

### Propulsion Machinery

Main Engine	2 X MTU
SHAFTING	2 X FIXED PITCH PROPELLER







# Passenger & Ferries

## 4 units of Air Conditioned Aluminum Catamaran - RIVA EXPRESS 1-4

### SHIP PARTICULARS

CONSTRUCTION	ALUMINIUM
LENGTH OVERALL	23.95 m.
MOULDED DEPTH	2.9 m.
BEAM EXTREME	7.0 m. (6.7m. MOULDED)
DWL	1.15 m.
FUEL	2x 900 L
WATER	2x 200 L
SULLAGE	1x 400 L
PASSENGERS	230 PAX
CREW	2 P
ENGINES	2x 350hp
PROPULSION	FIXED PITCH PROPELLERS
SURVEY / CLASS	NSCV 1E (AUSTRALIAN)





# Passenger & Ferries

## 200-PAX Electric Catamaran - MINE SMART FERRY NO.12-16

### Principal Particulars

Length Overall	23.97 meters
Breadth (Moulded)	7.00 meters
Depth Hull (Moulded)	2.30 meters

### Passenger

Passengers	250 seats
------------	-----------

### Propulsion

Electric Motor	2x 135 kW
Battery Capacity	815 kW-hr.
Speed App.	20 Km/H.







# Under construction

## HYDROGRAPHIC VESSEL

### Principal Particulars

Length Overall	60.00	M
Breadth (Moulded)	13.30	M
Depth (Moulded)	5.00	M
Maximum Draft (Full loaded)	3.05	M
Crew	67	men

### Performance

Maximum Speed	13.1	Knots
Cruising Speed	10	Knots
Range	+2400	nm
Endurance	10	Days

### Main Machinery & Equipment

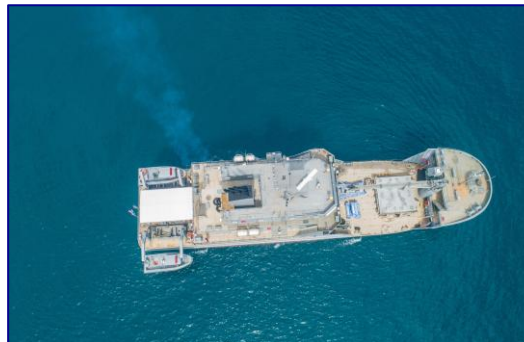
- 2 x Azimuth Thruster, E-motor driven
- 1 x Bow Thruster
- 3 x 1400 kWe Main Generator set
- 1 x Harbor generator set
- 1 x Integrated Bridge System
- 1 x Integrated Platform Management System
- 1 x 15 Ton SWL Crane with Double hoists
- 1 x Multibeam

### Armament

- 1 x 20mm FWD Machine Gun
- 1 x 20mm AFT Machine Gun
- 2 x 0.50 in, P & S Machine Gun

### Design Standard

ABS Class





# Under construction

## SCP TUG BOAT

### Principal Particulars

Length Overall	31.5 meters
Beam (Moulded)	12.6 meters
Depth (Moulded)	5.4 meters
Draft (Maximum)	4.5 meters

### Performance

Speed	12.1 Knots
Operation Range	1,000 Nautical Miles
Bollard Pull	>35 Metric Ton
Accommodation	11 Berths

### Main Machineries

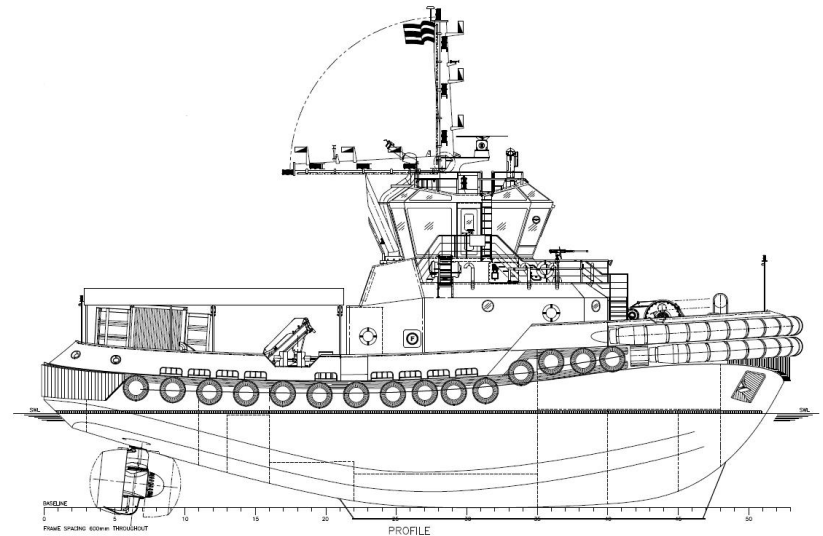
Main Engine	2 x CUMMINS (3,560HP)
Azimuth	2 x ASD Azimuth US155 P14 FP

### Fire Fighting

Fire Fighting Systems FSS

### Design Standard

Designer	Robert Allan
Class	LR + 100A1, Tug,
Firefighting Ship	1 (2400m <sup>3</sup> /hr) with Water Spray





*We Emphasize on Time and Quality*

